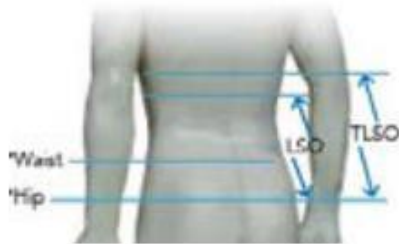


# BACK & NECK



\* Choose the greater of the two circumference measurements when using the measuring guide.

## RM VertabrEase LSO

### Measuring Guide

Item Code	Size	Back Panel	Front Panel	Waist/Hip Circ.
20729XSE	X-Short X-Slim	11"	6-7 ½"	25-30"
20729XSS	X-Short Slim	11"	6-7 ½"	30-35"
20729XSR	X-Short Regular	11"	6-7 ½"	35-40"
20729XSF	X-Short Full	11"	6-7 ½"	40-46"
20729XSX	X-Short X-Full	11"	6-7 ½"	46-53"
20729SE	Short X-Slim	12"	7-8 ½"	25-30"
20729SS	Short Slim	12"	7-8 ½"	30-35"
20729SR	Short Regular	12"	7-8 ½"	35-40"
20729SF	Short Full	12"	7-8 ½"	40-46"
20729SXF	Short X-Full	12"	7-8 ½"	46-53"
20729AE	Average X-Slim	13"	8-9 ½"	25-30"
20729AS	Average Slim	13"	8-9 ½"	30-35"
20729AR	Average Regular	13"	8-9 ½"	35-40"
20729AF	Average Full	13"	8-9 ½"	40-46"
20729AX	Average X-Full	13"	8-9 ½"	46-53"
20729TE	Tall X-Slim	14"	9-10 ½"	25-30"
20729TS	Tall Slim	14"	9-10 ½"	30-35"
20729TR	Tall Regular	14"	9-10 ½"	35-40"
20729TF	Tall Full	14"	9-10 ½"	40-46"
20729TX	Tall X-Full	14"	9-10 ½"	46-53"