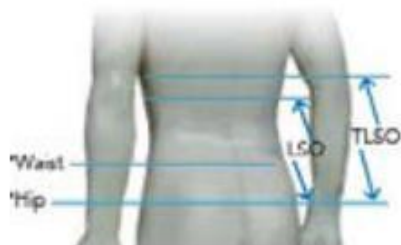


# BACK & NECK



\* Choose the greater of the two circumference measurements when using the measuring guide.

## RM VertabrEase TLSO and Restorative Safe Spine

### Measuring Guide

Item Code: VertabrEase TLSO	Item Code: Restorative Safe Spine	Size	Back Panel	Front Panel	Waist/Hip Circ.
20730I	20728I	Infant	7"	5 ½"	15-20"
20730T	20728T	Toddler	10"	8"	20-25"
20730C	20728C	Child	12"	10"	23-30"
20730XSE	20728XSE	X-Short X-Slim	12"	6-7 ½"	25-30"
20730XSS	20728XSS	X-Short Slim	12"	6-7 ½"	30-35"
20730XSR	20728XSR	X-Short Regular	12"	6-7 ½"	35-40"
20730XSF	20728XSF	X-Short Full	12"	6-7 ½"	40-46"
20730XSX	20728XSX	X-Short X-Full	12"	6-7 ½"	46-53"
20730SE	20728SE	Short X-Slim	14"	7-8 ½"	25-30"
20730SS	20728SS	Short Slim	14"	7-8 ½"	30-35"
20730SR	20728SR	Short Regular	14"	7-8 ½"	35-40"
20730SF	20728SF	Short Full	14"	7-8 ½"	40-46"
20730SX	20728SX	Short X-Full	14"	7-8 ½"	46-53"
20730AE	20728AE	Average X-Slim	16"	8-9 ½"	25-30"
20730AS	20728AS	Average Slim	16"	8-9 ½"	30-35"
20730AR	20728AR	Average Regular	16"	8-9 ½"	35-40"
20730AF	20728AF	Average Full	16"	8-9 ½"	40-46"
20730AX	20728AX	Average X-Full	16"	8-9 ½"	46-53"
20730TE	20728TE	Tall X-Slim	18"	9-10 ½"	25-30"
20730TS	20728TS	Tall Slim	18"	9-10 ½"	30-35"
20730TR	20728TR	Tall Regular	18"	9-10 ½"	35-40"
20730TF	20728TF	Tall Full	18"	9-10 ½"	40-46"
20730TX	20728TX	Tall X-Full	18"	9-10 ½"	46-53"

## Restorative Cervical HyperExtension Stop and Cervical Extension, Forward

### Measuring Guide

Item Code	Size
20728H	Sized per TLSO
20728C	Sized per TLSO